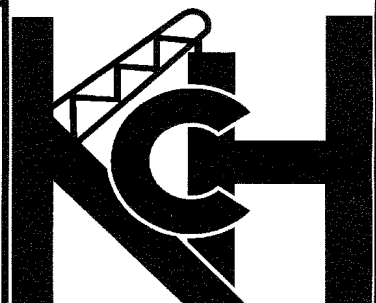


INFO:

DEMAG AC-350.
 350 TONNE MOBILE CRANE.
 COMBINATION = WIIHSSL-60°.
 MAIN BOOM = 42.4M @ 82°.
 LUFFING JIB = 25M.
 BALLAST = 62 TONNE.
 MAX RADIUS = 20M.
 HOOK HEIGHT = 69M.
 MAX LIFT @ RADIUS = 33.1 TONNES.
 MAX GROUND PRESSURE = 70 TONNES.



PROJECT: DEMAG AC-350 ERECTING ENERCON E-44 WIND TURBINE
3D VIEW.

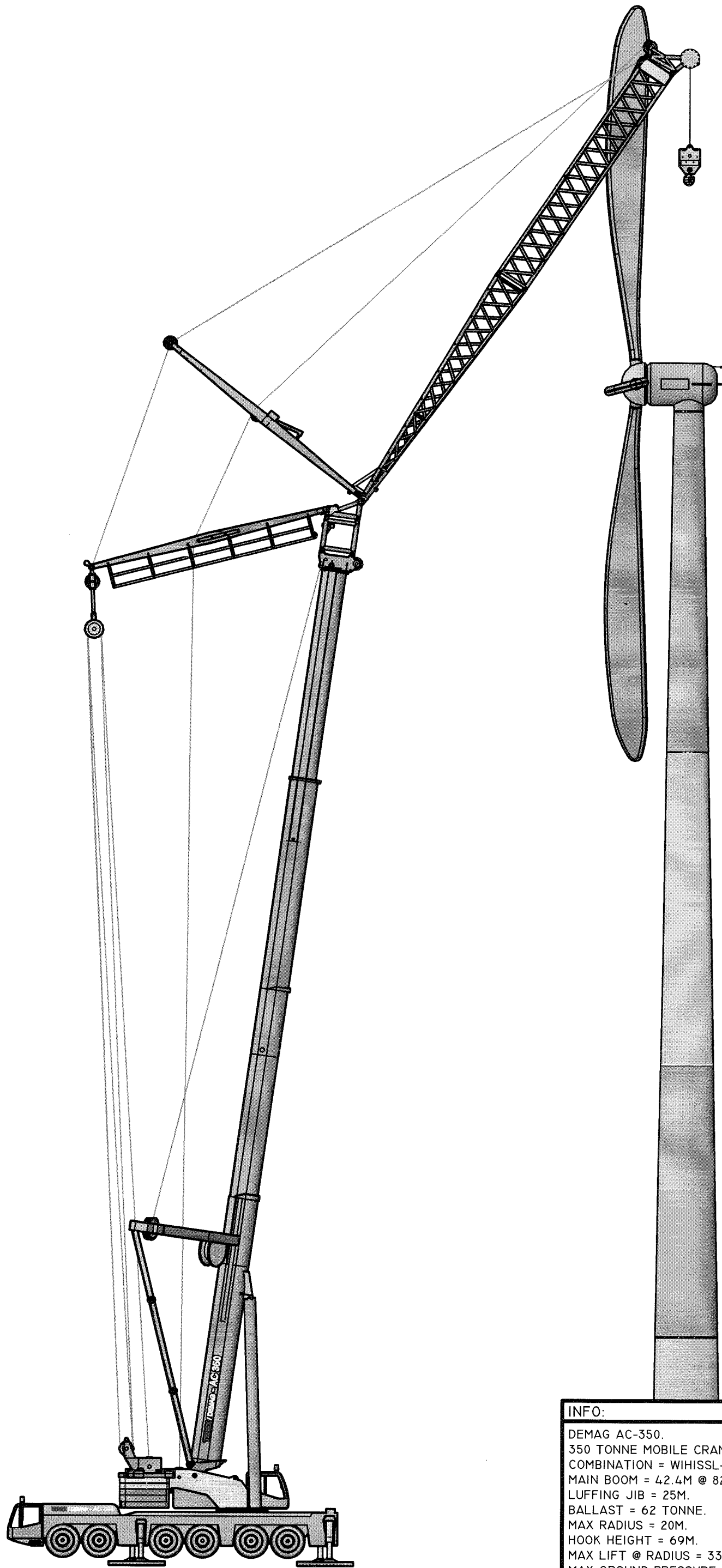
SCALE

DRAWN BY: R RYAN.

N/S

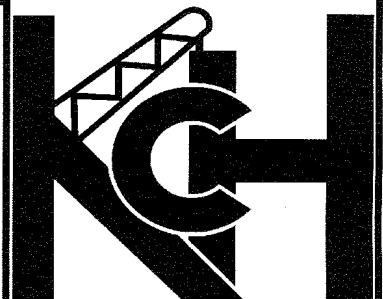
DATE: 02/10/08

KAVANAGH CRANE HIRE LTD.
 TEL: (+353) 053 - 9428128
 FAX: (+353) 053 - 9428302



INFO:

DEMAG AC-350.
 350 TONNE MOBILE CRANE.
 COMBINATION = WIISSL-60°.
 MAIN BOOM = 42.4M @ 82°.
 LUFFING JIB = 25M.
 BALLAST = 62 TONNE.
 MAX RADIUS = 20M.
 HOOK HEIGHT = 69M.
 MAX LIFT @ RADIUS = 33.1 TONNES.
 MAX GROUND PRESSURE = 70 TONNES.



PROJECT: DEMAG AC-350 ERECTING ENERCON E-44 WIND TURBINE
 ELEVATION VIEW.

SCALE

DRAWN BY: R RYAN.

N/S

DATE: 02/10/08

KAVANAGH CRANE HIRE LTD.
 TEL: (+353) 053 - 9428128
 FAX: (+353) 053 - 9428302